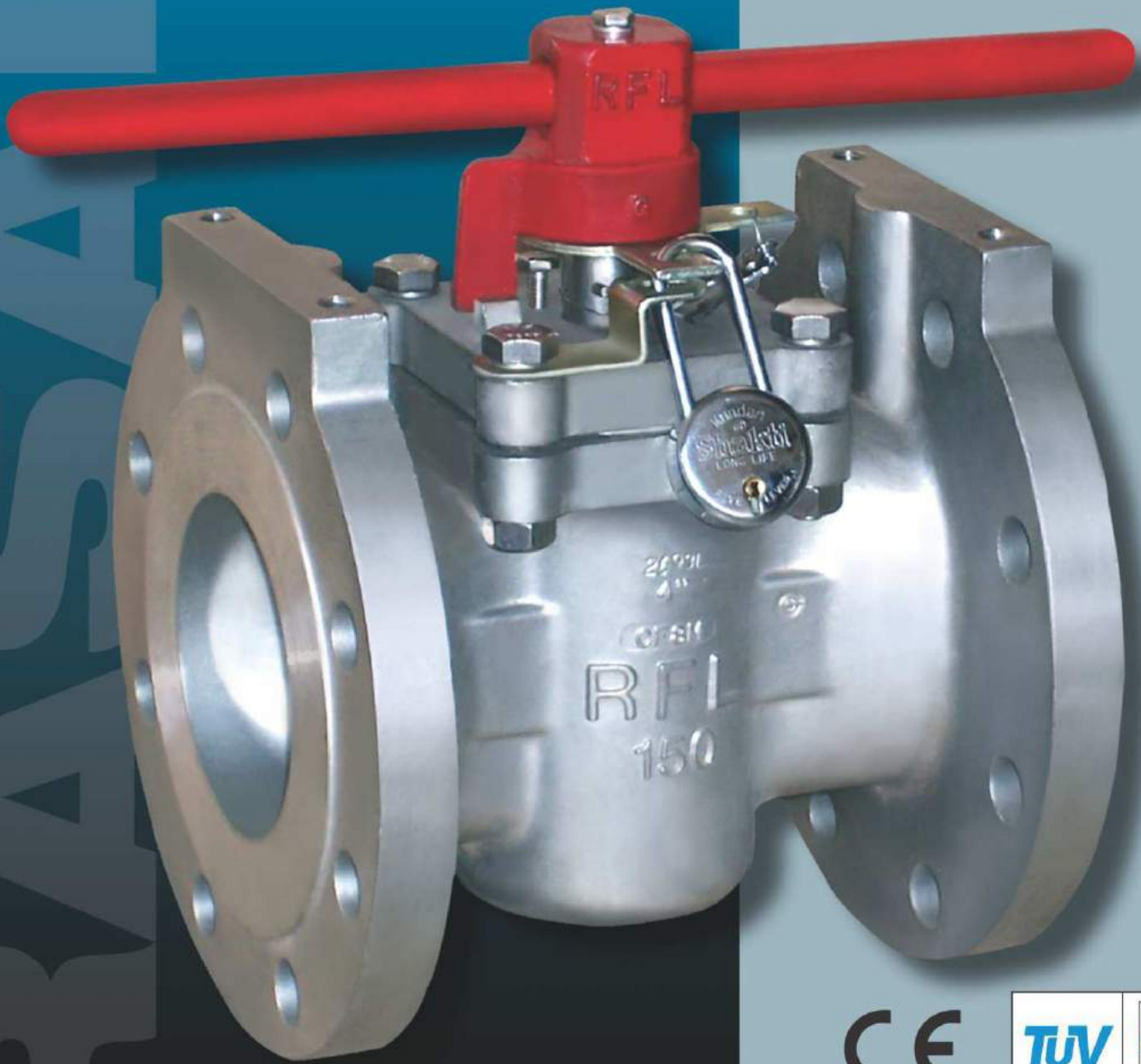




RASAI

SLEEVED PLUG VALVES

MATCHLESS IN QUALITY AND VALUE



**Most Efficient, Non-Lubricated,
Corrosion Resisting, Self-Sealing and Long Lasting.**

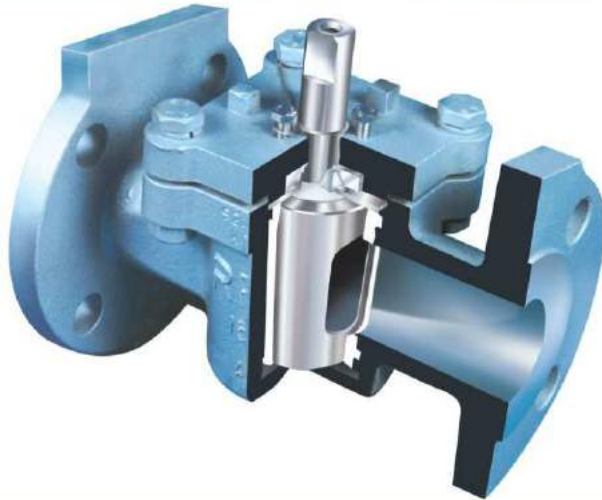
CE
2138



ISO 9001 : 2008

PAGE	CONTENTS
2	Components, Design Features
3	Valve Drawings In British / Metric Units
4	Jacketed Type Valves

PAGE	CONTENTS
5	RASAII Valves Are Just Tailor-Made For You !
6	Valves With Actuator Mounting And Locking Device
7	How To Order Your RASAII Sleeved Plug Valve ?

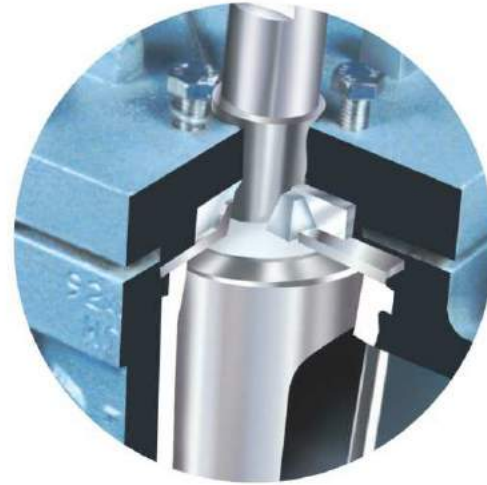


Components

Body / Cover	See Page No 7
Plug	
Sleeve	PTFE
Diaphragm And Wedge Ring	PTFE
Metal Diaphragm	SS 316
Thrust Collar	SS 316
Washer	PTFE
Studs & Nut	B7 & 2H / SS 316

Design Features

- Valves up to 4" in investment casting.
- 6" and above made out of Sand or Shell Casting.
- Superior Finish and longer life of valve body.
- Bi-directional flow.
- Positive shut-off with inline adjustment.
- Positive stem seal with reverse lip design.
- Inline PTFE sleeve surrounds the plug.
- PTFE sleeve locked in the body and field replaceable, on line.
- Designed for throttling.
- Unique plug and body design for low torque operation.
- Non-Lubricated, self-cleaning of plugs while in operation.
- Zero leakage (Bubble tight shut-off).
- Easy assembling and disassembling.
- Technologically superior design, our speciality.
- Cost effective and top value for your dollar.
- Proven performance.
- Self sealing.



DIAPHRAGM AND WEDGE RING EXPOSED VIEW

Options Available

- Both ANSI 150# And 300#
- Fully Jacketed
- Partially Jacketed
- Flanged End
- Butt Weld
- Socket Weld
- 3-way
- 3-way Jacketed
- 4-way

RASAII SLEEVED PLUG VALVES WITH IMPECCABLE PERFORMANCE!

Material and Specifications:

Refer to page 7,

How to order RASAII sleeved plug valves ?

For Class 150#

Size		Break - Away Torque inch Lbs (Nm)	Flow Rate (Value)	
Inch	mm		Cv	Kv
½	15	192 (25.5)	9.5	11
¾	20	192 (25.5)	9.5	11
1	25	308 (35)	42	49
1½	40	460 (52)	95	112
2	50	630 (71)	190	224
3	80	965 (110)	326	384
4	100	1450 (165)	694	816
6	150	3820 (370)	1112	1308
8	200	6366 (721)	1665	1960

Torque

Start - Break - Away Torque

Running - 60% of B.A.T

Close - 80% of B.A.T

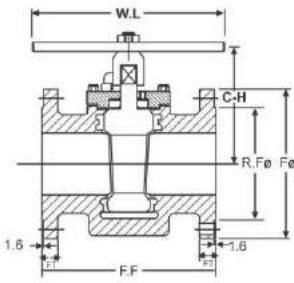
To obtain - Kv Value multiply Cv Value by 0.85



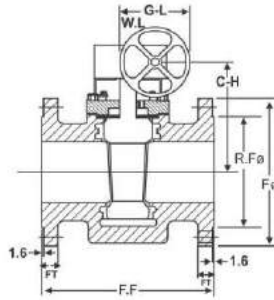
4 inch Class 300# plug valve with gear box on special request.

SLEEVED PLUG VALVE DRAWINGS

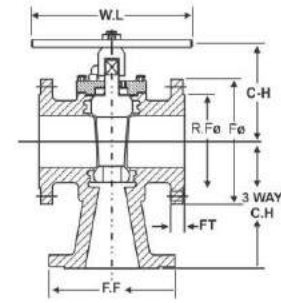
1/2" TO 4"



6" and Above, Gear Operated



3-Way Valves



British Unit

all dimensions in Inches

Size	F-F		FØ		F.T		RF Ø	RFT	P.C.D		NOH		SOH		W.L	G.L	C-H		3-WAY C.H	
	CLASS		CLASS		CLASS				CLASS		CLASS		CLASS				CLASS		CLASS	
	150#	300#	150#	300#	150#	300#			150#	300#	150#	300#	150#	300#			150#	300#	150#	300#
1/2	4.25	5.50	3.50	3.75	.44	.56	1.38	.06	2.38	2.63	4	4	.63	.63	6.38		2.92	2.92	2.75	2.88
3/4	4.63	6.00	3.88	4.63	.44	.63	1.69	.06	2.75	3.25	4	4	.63	.75	6.38		2.92	2.92	2.88	3.00
1	5.00	6.50	4.25	4.88	.44	.69	2.00	.06	3.13	3.50	4	4	.63	.75	8.75		3.25	3.25	3.50	3.78
1 1/2	6.50	7.50	5.00	6.13	.56	.81	2.88	.06	3.88	4.50	4	4	.63	.88	12.50		3.75	3.75	4.13	4.38
2	7.00	8.50	6.00	6.50	.63	.88	3.63	.06	4.75	5.00	4	8	.75	.75	18.00		4.50	4.50	4.50	4.78
2 1/2	8.00	11.13	7.50	8.25	.75	1.13	4.13	.06	5.50	5.88	4	8	.75	.88	24.00		4.75	4.75	5.13	5.58
3	8.00	11.13	7.50	8.25	.75	1.13	5.00	.06	6.00	6.63	4	8	.75	.88	24.00		5.00	5.00	6.13	5.58
4	9.00	12.00	9.00	10.00	.94	1.25	6.19	.06	7.50	7.88	8	8	.75	.88	30.00		6.10	6.10	6.00	6.78
6	10.50	15.88	11.00	12.50	1.00	1.44	8.50	.06	9.50	10.63	8	12	.88	.88		18	7.75	7.75	7.50	8.50
8	11.50	16.50	13.50	15.00	1.13	1.63	10.63	.06	11.75	13.00	8	12	.88	1.00		18	9.50	9.50	9.00	10.00
10	13.00	18.00	16.00	17.50	1.19	1.88	12.75	.06	14.25	15.25	12	16	1.00	1.13		24	11.00	11.00	11.00	12.00
12	14.00	19.75	19.00	20.50	1.25	2.00	15.00	.06	17.00	17.75	12	16	1.00	1.25		30	12.50	12.50		
14	15.00	30.00	21.00	23.00	1.38	2.12	16.25	.06	18.75	20.25	12	20	1.13	1.25		30	13.00	13.00		
16	30.00	33.00	23.50	25.50	1.44	2.25	18.50	.06	21.25	22.50	16	20	1.13	1.38		24	15.00	15.00		

Metric Unit

all dimensions in Millimetre

Size	F-F		FØ		F.T		RF Ø	RFT	P.C.D		NOH		SOH		W.L	G.L	C-H		3-WAY C.H	
	CLASS		CLASS		CLASS				CLASS		CLASS		CLASS				CLASS			
	150#	300#	150#	300#	150#	300#			150#	300#	150#	300#	150#	300#			150#	300#	150#	300#
15	108	140	89	96	11	14.3	35	1.5	60	67	4	4	16	15	152		74	74	70	73
20	117	152	98	117	11	16	43	1.5	70	83	4	4	16	19	152		74	74	73	76
25	127	165	108	124	11	17.5	51	1.5	79	89	4	4	16	19	178		82	82	89	96
40	165	190	127	156	14.3	20.7	73	1.5	98	114	4	4	16	22	229		95	95	105	111
50	178	216	152	165	16	22.3	92	1.5	121	127	4	8	19	19	305		114	114	114	121
65	203	283	190	210	19	29	105	1.5	140	149	4	8	19	22	457		120	120	130	141
80	203	283	190	210	19	29	127	1.5	152	168	4	8	19	22	457		127	127	130	141
100	229	305	229	254	24	32	157	1.5	190	200	8	8	19	22	762		154	154	152	171
150	267	403	279	318	25.4	37	216	1.5	241	270	8	12	22	22		224	196	196	190	216
200	292	419	343	381	29	41	270	1.5	298	330	8	12	22	25		406	241	241	229	254
250	330	457	406	445	30	48	324	1.5	362	387	12	16	25	29		406	279	279	280	305
300	356	502	483	521	32	51	381	1.5	432	450	12	16	25	32		406	317	317		
350	381	762	527	584	35	54	413	1.5	476	514	12	20	29	32		406	330	330		
400		838	597	648	37	57.2	470	1.5		572		20	29	35		459	381	381		

LEGEND

F-F	FACE TO FACE	NOH	NUMBER OF HOLES
FØ	FLANGE DIAMETRE	SOH	SIZE OF HOLE
F-T	FLANGE THICKNESS	W.L	WRENCH LENGTH
RFØ	RAISED FACE DIAMETRE	G.L	GEAR LENGTH
RFT	RAISED FACE THICKNESS	C-H	CENTER OF FLANGE TO HEIGHT OF BODY
P.C.D	PITCH CIRCLE DIAMETRE	3-WAY C-H	CENTER OF FLANGE TO BOTTOM FLANGE