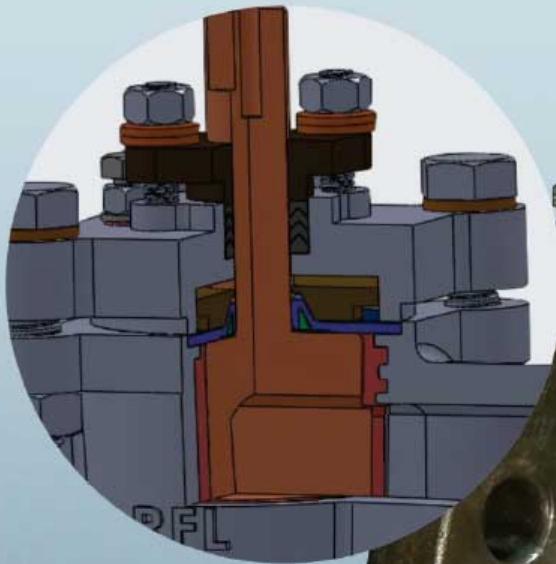




# RASAI

## Sleeved Plug Valve with “Low” Fugitive Emission

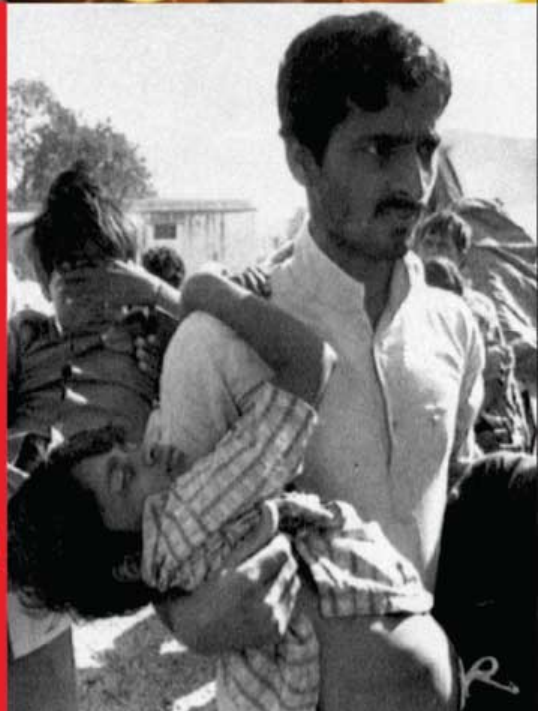




# High Fugitive Emission Disasters across the world



Do  
**you**  
want  
to be  
**one**  
among?

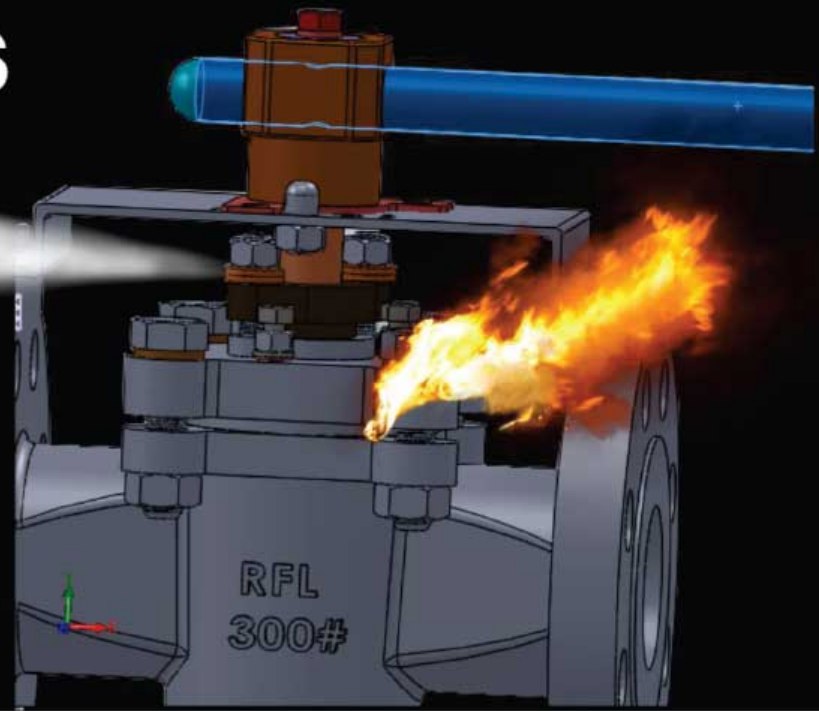


Make wise decision by choosing **RFL**  
**Valves** to save Down Time and Prevent Monetary Loss.



# ENVIRO VALVES

API 641  
ISO 15848  
CERTIFIED



Test Methods to qualify quarter turn valves for Low Emission Service.

- a. International Standards Organization ISO 15848 – 1
- b. American Petroleum Institute API 641

Both standards are technically viable option and are considered example of good engineering practice that can be used for Valve qualification and can be considered representative of the valve real like operating condition.

Either protocol can qualify valves for high temperature service where graphite seals are typically used and lower temperature service where PTFE – based seals are usually used.

The ISO Procedure allows for the use of two different test gases, Helium and Methane, each with different leakage measurement methods.

The API 641 protocol uses Methane and sniffing only.

Leakage Measurements are taken at prescribed intervals using a calibrated leak detection unit that meets specific requirements spelled out in the standard. Then, the valve is heated to an elevated temperature, which is determined ahead of time and is based on valve design and material used, and the stem cycling and measurement process is repeated.

This cycle of ambient and elevated temperature operation is repeated a number of times. The number of thermal cycles depends on the Standard used.

**RFL Sleeved Plug Valves are certified for ISO 15848-1 using Helium and API 641 using Methane as test Medium.**

Size : ½” – 16” ; Pressure Class 150# & 300#

MOC : DI, WCB, CF8M, CF3M, CD4mcu, Alloy 20, Hastalloy B or C, Monel 400, CF8, CF3, LCB, Nickel CZ100, 904L, Dupl. St. St. 4A, 5A, Argonite, CG8M, CY40, WCC, 1B...



**RASAII**

M/s. RASAII FLOW LINES PVT LTD,

TS No: Ferndale, 1st Avenue, RWD Layout, Near Gayathri Nagar,  
Medavakkam, Chennai - 600100.

Factory: 15D/2, Sipcot Industrial Complex, Pudukottai - 622 002, TN, India

Phone: +91-93848 00896, 93848 00897

E-mail: [admin@rflvalves.com](mailto:admin@rflvalves.com) Url: [www.rflvalves.com](http://www.rflvalves.com)