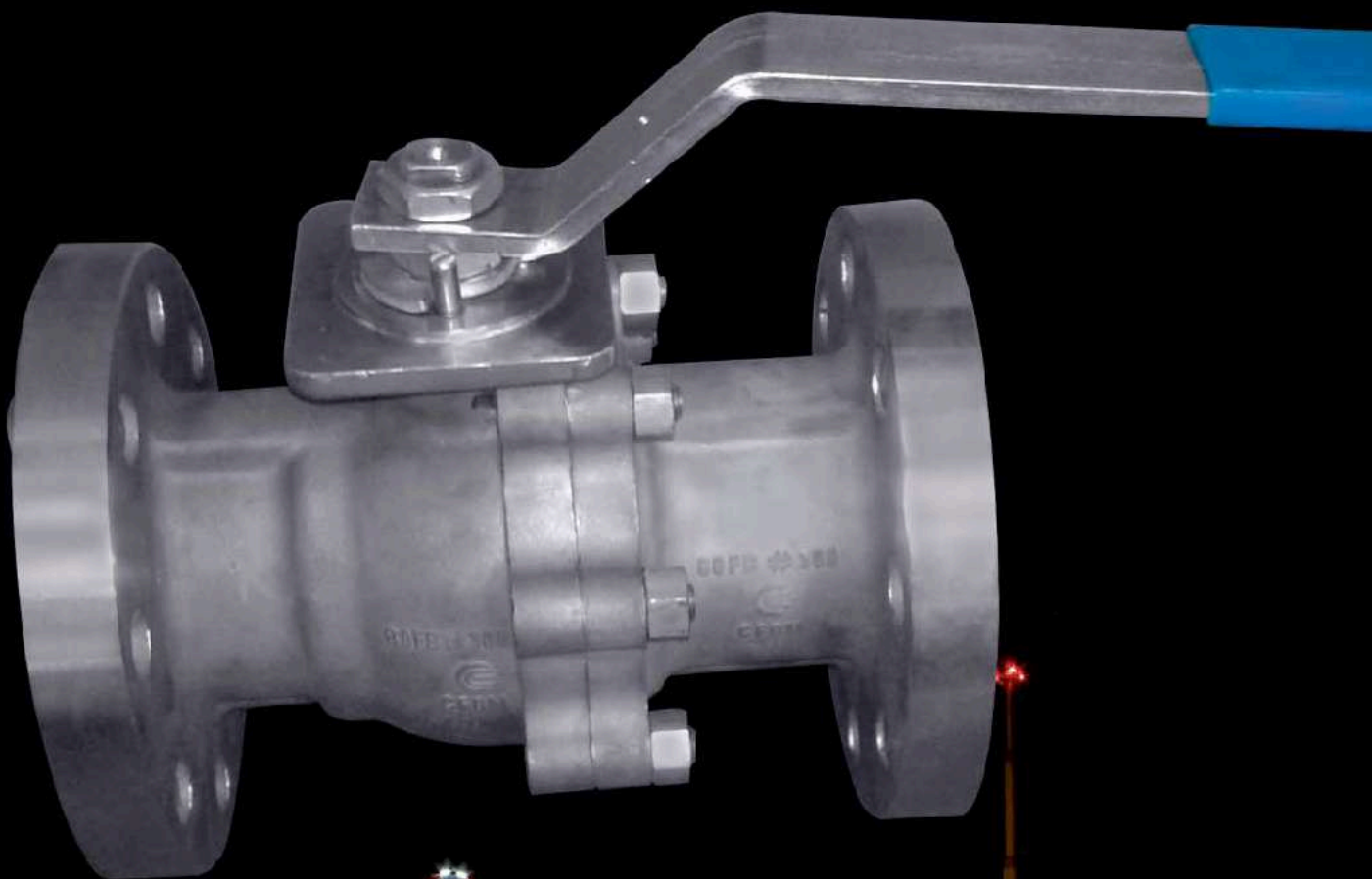




RASAI

**A SOLUTION TO
HIGHLY CORROSIVE & EROSIVE APPLICATIONS**



TRADITIONAL COMPANY MANUFACTURING BALL VALVE

FOR REFINERIES, PETROCHEMICAL, FERTILIZERS, SUGAR, PAPER INDUSTRIES, STEEL, CEMENT, PHARMA, WASTE WATER, FOOD, POWER PLANT, etc....
FOR GLOBAL REQUIREMENT & DOMESTIC

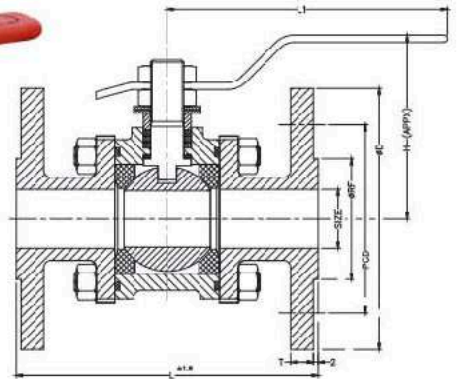
STANDARD:

1. INTERNATIONAL SPECIFICATION
2. PRESSURE CLASS 125, 150 & 300

BALL VALVE - 3 Piece Flanged End

BALL VALVE - FULL BORE & REDUCED BORE
(CI / DI / WCB / CF8 / CF8M / CN7M / CF3 / CF3M / HASTALLY 'B&C' / CZ100)

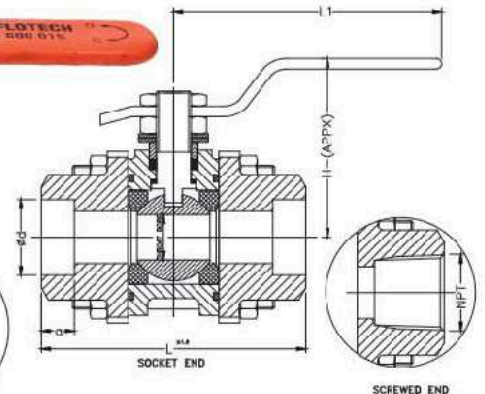
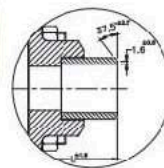
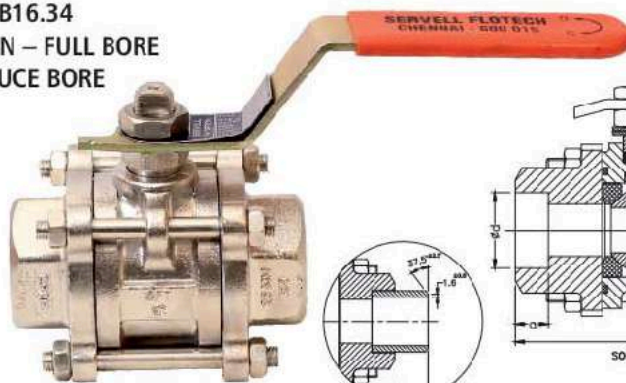
DESIGN STD : BS 5351 / EN ISO 17292 / ASME B16.34
SIZE : 15mm to 150mm – 3 PIECE DESIGN
BODY : ASTM A 351Gr. CF8/CF8M
TRIM : AISI 304 / 304L / 316 / 316L
SEAT : PTFE / PEEK
RATING : ASME CLASS 150 / 300
FACE TO FACE : ASME B16.10
END : ASME B16.5
TESTING STD : BS 6755-1 / API 598
OPTIONAL : FIRE SAFE – API 607
MOUNTING PAD – ISO 5211



BALL VALVE - Screwed End & Socket weld

BALL VALVE (CI / DI / WCB / CF8 / CF8M / CN7M / CF3 / CF3M / HASTALLY 'B&C' / CZ100)

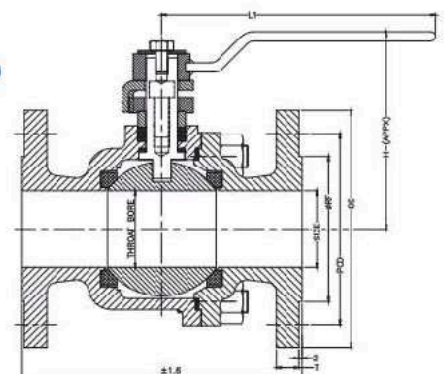
DESIGN STD : BS 5351 / EN ISO 17292 / ASME B16.34
SIZE : 15mm to 50mm - 3 PIECE DESIGN – FULL BORE
50mm - 3 PIECE DESIGN – REDUCE BORE
BODY : ASTM A 351Gr. CF8/CF8M
TRIM : AISI 304 / 304L / 316 / 316L
SEAT : PTFE / PEEK
RATING : ASME CLASS 150 / 300
END : SE - NPT / BSPT / BSP
SW – ASME B16.11
TESTING STD : BS 6755-1 / API 598
OPTIONAL : FIRE SAFE – API 607
MOUNTING PAD – ISO 5211
BUTT WELD – B16.25



BALL VALVE - 2 Piece Flanged End

BALL VALVE –FULL BORE & REDUCED BORE
(CI / DI / WCB / CF8 / CF8M / CN7M / CF3 / CF3M / HASTALLY 'B&C' / CZ100)

DESIGN STD : BS 5351 / EN ISO 17292 / ASME B16.34
SIZE : 25mm to 200mm - 2 PIECE DESIGN-FIRE SAFE DESIGN
BODY : ASTM A 351Gr. CF8/CF8M
TRIM : AISI 304 / 304L / 316 / 316L
SEAT : PTFE / PEEK
RATING : ASME CLASS 150 / 300
FACE TO FACE : ASME B16.10
END : ASME B16.5
TESTING STD : BS 6755-1 / API 598
OPTIONAL : FIRE SAFE – API 607
MOUNTING PAD – ISO 5211



**Precisioned components for
free flow & longer life.**



BALLS



STEMS



PTFE

**SEAT RINGS, PACKINGS,
BODY SEALS**





M/s. RASAI FLOW LINES PVT LTD

TS No: Ferndale, 1st Avenue, RWD Layout, Near Gayathri Nagar, Medavakkam, Chennai - 600100.

Factory : 15D/2, Sipcot Industrial Complex, Pudukottai - 622 002, TN, INDIA

Phone : +91- 93848 00896 / 93848 00897 E-mail : admin@rflvalves.com Url : www.rflvalves.com